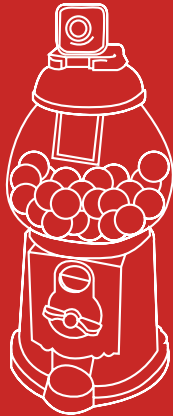


**CRIT**  
**CVIL**





Artifact design by Shad Gross  
Postcard design by Chi Chen

# CANDY CAMERA

The Candy Camera explores the potential for constructing meaning from mundane eating habits. Made from a traditional gumball machine, LCD screen, webcam and Raspberry Pi, it takes a picture when it is used and adds it to a slideshow that is displayed in the bowl. By capturing moments of indulgence, the Candy Camera gives the user the opportunity to construct their own narratives about their consumption of candy without imposing specific judgment.